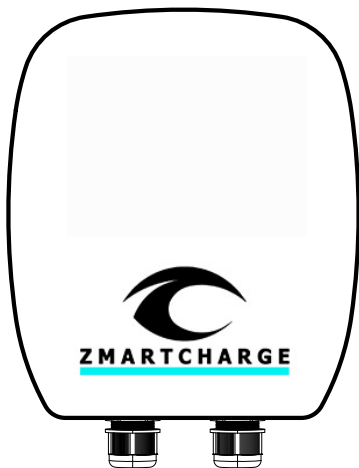


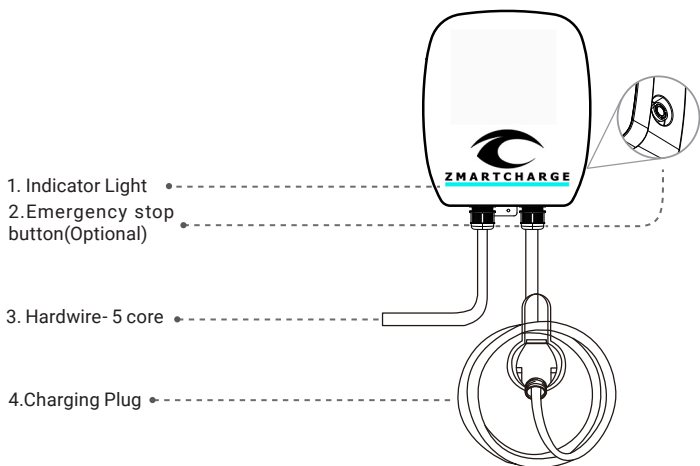


# WallBox AC

## User / Instalation Manual



## 01/ Product Overview



### What is in the box



Charging station +  
Charging plug × 1



TA5\*30mm × 7



Hanging board × 1

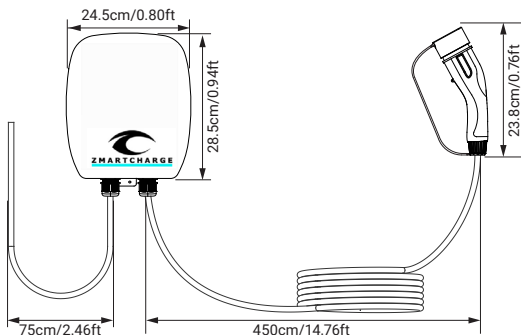


Hook × 1



User manual × 1

## 02/ Dimension



## 03/Technical Specifications

General	
Power	22KW
Voltage	220/380Vac±10% TN/IT and TT support
Power Supply	3 Phase
Current	32A
Power Plug	5 core hardwire
Charging Cable	5 × 6.0mm <sup>2</sup> +0.5mm <sup>2</sup>
Working Environment	
Working Temp.	-25°C~+55°C
Humidity	5%~95% Non-Condensing
IP Rate	IP65 for control box and IP54 for Charging plug
IK Rate	IK08
Work Altitude	<2000m
Connectivity	
Bluetooth	BLE 4.2, Output power max 21dBm (125mW)
Wi-Fi	2.4 G, Output power max 20dBm(100mW) on 11b, 14dBm(25mW) on 11n and MCS7
OCPP	1.6 J
4G Module	Output power 23,5 dBm(224mW) on LTE and 33dBm (1.995W) on GPRS
Certifications	IEC61851, 62196, 62955 and 61000-3/6
Compliance	RoHS
Protection	RCD 30mA AC / 6mA DC

Dimension & Package	
Charger size	L285 × W245 × H88mm
Cable Length	4.5 Meters/Customized
Inner Box	L447 × W337 × H185mm
Net Weight	5.35kgs (22KW)
Outer Carton	L690 × W460 × H390mm

## 04/ Safety Protection



Temperature  
Protection



Auto Repair



Efficient  
Charging



Protection  
Level IP54



RCD



High End  
MCU



Under Voltage  
Protection



Over Voltage  
Protection



Short Circuit  
Protection



Earth Leakage  
Protection



Lightning  
Protection



Over Load  
Protection

## 05/Important Safety Instructions

1. Ensure that the equipment is well grounded before powering it on.
2. Keep the charging gun head clean and dry. If it gets dirty, wipe it with a clean and dry cloth.
3. Do not touch the charging gun with your hands while charging.
4. Make sure that the input voltage, frequency, circuit breaker, or fuse of the device and other conditions meet the specifications before powering on the equipment.
5. Insulate all tools as necessary to prevent bare metal parts from touching the metal frame and causing a short circuit.
6. Do not attempt to disassemble, repair or modify the charging pile. If maintenance or modification is necessary, contact ZmartCharge. Improper operation can result in equipment damage, water leakage, leakage, and other hazards.
7. The equipment should be operated in a clean, constant temperature, and constant humidity environment as much as possible, and the operating environment must not contain volatile gases or flammable gases.
8. Charge with caution during rain and thunder.
9. Follow the instructions strictly during use. Do not allow children to get close to or use the charging pile while charging to avoid injury.
10. After charging is complete, hang the charging gun properly back into the charging gun base. Avoid placing the charging gun head at random or dropping it on the ground to prevent safety accidents.
11. Recycle the product in accordance with local regulations.



## 06/ Certifications

The ZmartCharge wall cbox harger has undergone tests towards all applicable CE standards at the Beide test institue that holds several international acreditations. The cable and T2 plug is tested by TUV Rheinland. Through all these tests, the customer can be ensured that all CE requirements are fullfilled for the charger. In addition the charger fulfills the RoHS requirements.

[illegible][illegible]

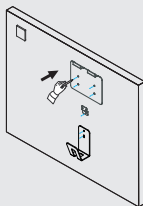
## 07/Installation Instructions

**WARNING:** Turn off the power before you begin the installation. Use extreme caution and follow instructions carefully.

### 1. Drilling

---

1



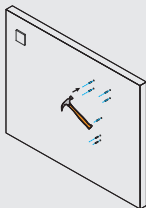
1. Use the Bigger plate and hook to mark the location of the screw holes on the wall where you plan to mount the station and hook

2



2. Use a hammer drill to make holes in the wall where you marked the locations

3

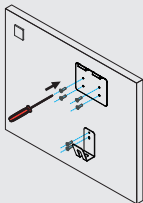


3. Hammer the Plastic Expansion Anchors into the holes you drilled

## 2.Mounting

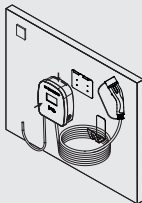
---

1



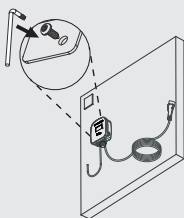
1. Fix the Hanging board to the wall by TA5\*30mm screws and Hook to the wall by TA5\*30mm screws

2



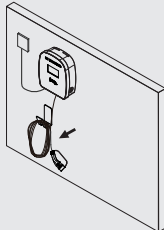
2. Hang the wallbox station on the plate that is now affixed to the wall.

3



3. Lock the bottom anti-sheft by TA5\*30mm screws

4



4. Hang the Charging cable on the hook that is now affixed to the wall

## 08/ Electric Wiring

---

1. The charger is equipped with a 32A, 3 phase TN or IT CEE plug.
2. The charger shall have a separate line with a line breaker with the maximum of 3 phases, 32A, and equipped with RCD 30mA AC .
3. ZmartCharge can provide converter cables with plugs to connect to:
  - a) 32A, 3 phase IT networks
  - b) 16A, 3 phase IT networks
  - c) 16A, 1 phase IT network
  - d) 16A , 3 phase TN networks
4. An electrician is needed to install a new outlet for the charger, however the user can plug/unplug the charger.

## 09/ Indicator Light Description

Status		Station Interface				
Station Status	Description	Mobile APP	RGB Indicator Light			LCD Screen N/A
			Blue	Green	Red	Display
Power on (Unplugged)	Grounded	Available	Stay on	—	—	Available (Grounded)
	Ungrounded	Available	Flashing slow	—	—	Available (Ungrounded)
Plug in	Preparing	Preparing	—	Stay on	—	Preparing
Booking the Charging time	Reserved	Reserved	—	Flashing slow	—	Reserved
Charging	Grounded	Charging	—	Flashing slow	—	Charging( Grounded)
	Ungrounded	Charging	—	Flashing fast	—	Charging(Ungrounded)
Charging Completed	Finished	Finished	—	Stay on	—	Finished
Emergency Stop	Emergency Stop	Faulted	—	—	Flashing slow	FastStop
Protection Error	Leakage Error	SuspendedEVSE	—	—	Flashing slow	Creepage
	Over Voltage	SuspendedEVSE	—	—	Flashing slow	Over Voltage
	Under Voltage	SuspendedEVSE	—	—	Flashing slow	Under Voltage
	Over Current	SuspendedEVSE	—	—	Flashing slow	Over Current
	Over Temperature	SuspendedEVSE	—	—	Flashing slow	Over Temperature
	Leakage Self-test Error	Keep Current Status	—	—	Flashing slow	Leakage Self-test Error
	Relay Error	Keep Current Status	—	—	Flashing slow	Relay Error
	CP Error	Keep Current Status	—	—	Flashing slow	CP Error
	RN821X Error	Keep Current Status	—	—	Flashing slow	RN821X Error
	N12V Error	Keep Current Status	—	—	Flashing slow	-12V Error
	12V Error	Keep Current Status	—	—	Flashing slow	12V Error

**ZmartCharge AS**  
**Nedre Prinsdals vei 121B**  
**1263 Oslo**  
**Norway**

hereby declare that this SoC is issued under our sole responsibility and belongs to the following product:

ZmartCharge WallBox AC  
Product Number CP\_ZC00007



We declare under our sole responsibility that the above referenced product with the following directives:

ROHS Directive 2011/65/EU  
Radio Equipment Directive (RED) 2014/53/EU

**The following standards have been applied:**

**Health and safety (Article 3.1 of RED)**

EN IEC 61851-1:2019  
EN 61439-1:2011  
EN IEC 61439-7:2020  
IEC 62955:2018  
EN 63211:2008

**EMC (Article 3.1b of RED)**

EN IEC 61851-21-2:2021  
EN 301 489-1 V2.2.3  
EN 301 489-3 V2.1.1  
EN 301 489-17 V2.2.1  
EN 301 489-52 V1.1.0

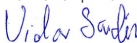
**Radio Spectrum (Article 3.2 of RED)**

EN 300 328 V.2.2.2  
EN 300 330 V.2.1.1  
EN 301 908-1 V13.1.1

**RoHS**

EN IEC 63000:2018

OSLO 18 April 2024



Vidar Sandvik, CEO

Producer : Shenzhen Hysun Power Co. Limited  
Distributor: ZmartCharge AS, Nedre Prinsdals vei 121B, Oslo, Norway  
Model: HY220W3-T2  
**Serial Number: ZC00001**  
220V, 32A, IT and TN net, 1 phase (7kW) and 3 phase (22kW, 50Hz.)  
  
Certifications: EMC, IEC 61851 62196, 62955 and 61000-3/6  
IP Rate: IP 65 (Indoor and outdoor use)  
Production Date: 2023-11-10



RoHS

**Beide**  
Compliance Laboratory



## ZmartCharge AS

For Technical Assistance Call:

T: +47 95 83 2707

E: [info@ZmartCharge.com](mailto:info@ZmartCharge.com)

For additional products and information, please visit our website at:  
[www.ZmartCharge.com](http://www.ZmartCharge.com)